

# LM-M280

High-quality medium-sized metal additive manufacturing equipment



High efficiency



High security



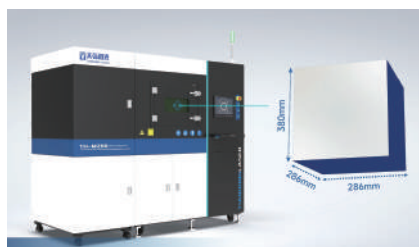
Superior wind farm structure



Good airtightness



## ► WHY TH-M280?



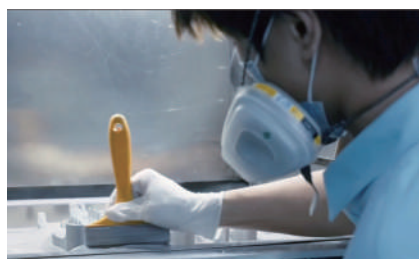
### Advantages of square molding space

The TH-M280 gives you design freedom with its 286 x 286 x 380 mm build volume. The optimized optical structure enables high-quality print results even in the corners of the substrate, without any disruptive screws on the substrate.



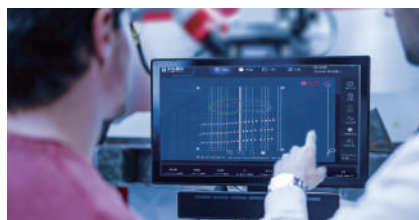
### Full-field cluster laser system

With full-field (2 x 500 W, optionally 4 x 500 W), all lasers emit beams across the entire build volume, thus shortening the production time per part - the fully automatic alignment of the scanning fields with each other ensures excellent precision.



### Humanized operation

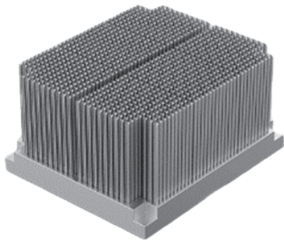
Realize real-time powder adding operation under inert gas protection, and the volume of overflow powder cylinder and powder supply cylinder is larger. Suitable for batch production operation.



### TH3D control system

TH3D control software can complete the entire control process from data to part processing and forming. Users can easily complete printing tasks by following the operating instructions.

## ► 3D Printing Case



Sample Name: Mobile phone hinge

Printing Equipment: TH-M280

Printing Material: TC4

Metal 3D printing technology can solve the problems of difficult and low yield in traditional titanium alloy processing, and effectively complete the batch 3D printing production of hinge shaft covers. The application of this technology has enabled titanium alloy to be widely used in the 3C industry, especially in the hinge parts of folding screen mobile phones.



Shoe Model



Electronic Cigarette Mold



Turbojet Model

## ► Technical Parameters

Dimension	L(2536) xW (1270)xH (2230)mm <sup>3</sup>
Build Volume	286mmx286mmx380mm
Laser Power	500W*1/2
Layer Thickness	20-120μm
Scanning Speed	7m/s
Forming speed	Max 35cm <sup>3</sup> /h (Single laser)
Oxygen Content	<100ppm
Light spot diameter	50-120μm
Protective gas	Nitrogen/Argon
Data format	STL file
Complementary software	TH-3Dprint
Electrical consumption	380V, 14KW
Applicable material	Titanium alloy, aluminum alloy, high temperature alloy, stainless steel, high strength steel, mold steel
Weight	2.1T

## ► About Us



### Technical Consultation

Including consulting on equipment selection, material processes, and operations



### Original spare parts

Ensure high performance and long service life



### Equipment Training

Full training on equipment, systems, maintenance and can be customized



### Regular after-sales

Regular return visit  
Provide comprehensive and detailed service

✉ Email: [info@tianhonglaser.com](mailto:info@tianhonglaser.com)

🌐 Website: <https://www.limu-3d.com/>



Address: No.66 Tonghe Road, Weiting, Suzhou Industrial Park (SIP), Jiangsu, 215122, China